



### Headline Statistics

<p>WCWSS DAM STORAGE (%)</p> <p><b>49.4</b></p>	<p>WEEKLY DAM LEVEL CHANGE (%)</p> <p><b>1.50</b></p>	<p>AVERAGE TOTAL DAILY WATER USE (MLD)*</p> <p><b>856</b></p>	<p>AVERAGE WATER USE PER PERSON (l/d)**</p> <p><b>146</b></p>
---	---	---	---

\* The total daily water usage is the total water provided by the City of Cape Town and includes water provided to Stellenbosch and Drakenstein Municipalities

\*\* The average per person water use is the average for the City of Cape Town only and is estimated as Total Water Use / Population. Summer demands are expected to be higher than the yearly average due to the increased use of water for outdoor irrigation. Average water use per person over the last 12 months was approximately 160 l/d

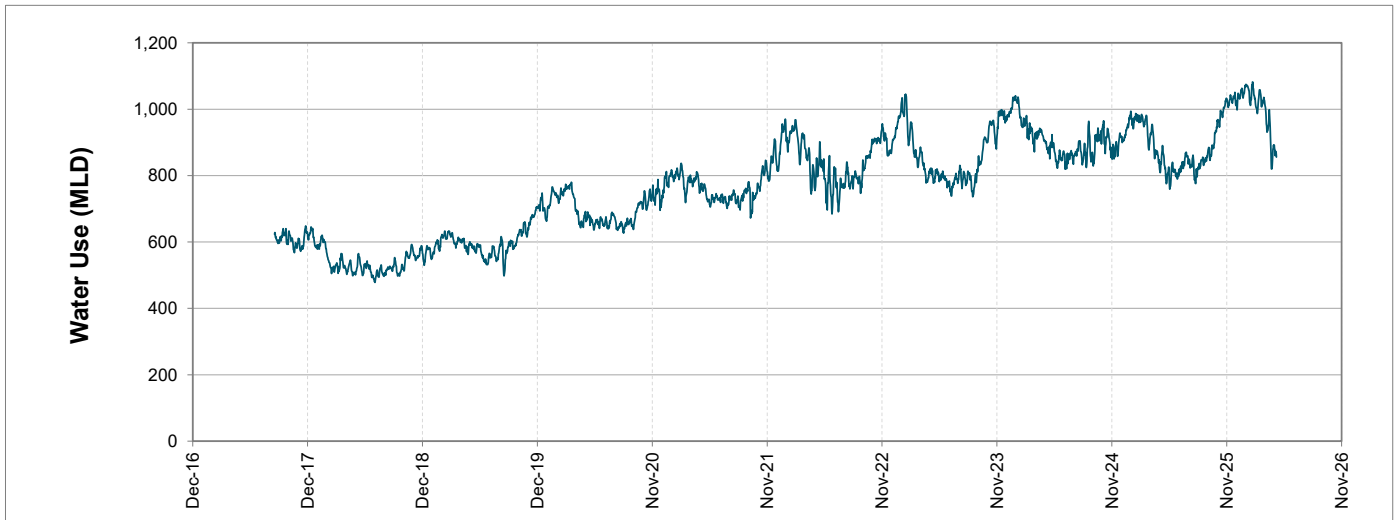
### Water Resource Status

WATER RESOURCE STATUS	MEANING OF CURRENT STATUS
Early Drought Caution	<p>'Continued water wise use encouraged due to lower than anticipated dams level, cautioning possible start of a drought cycle'</p> <p>The main dams supplying the City are approximately 20% lower than last year - as shown on Page 3. While there is no immediate reason for concern, this updated drought risk status is part of the City's proactive approach to monitoring for and managing future droughts. This status and the corresponding actions are discussed in the Water Outlook 2023.</p> <p>The Water Resource Status will be updated again in May 2026.</p>

### Water Production from Different Sources

<p>MAJOR DAMS (MLD)</p> <p><b>846</b></p>	<p>MINOR DAMS (MLD)</p> <p><b>3</b></p>	<p>GROUND WATER AND SPRINGS (MLD)</p> <p><b>7</b></p>
---	---	---

### Overall Water Usage Trend (2010 - Present)



WCWSS means Western Cape Water Supply System

MLD means million litres per day

More information on Water Saving and Restrictions is available on the City of Cape Town's 'ThinkWater' website

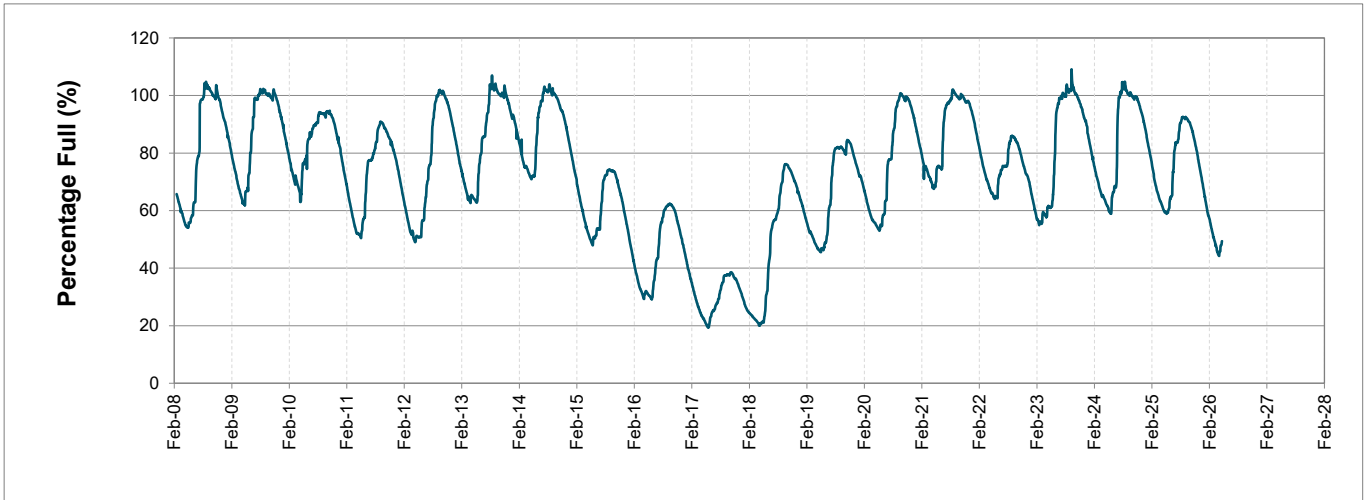
# Water Stored in Major Dams (WCWSS)

Overall Percentage Full **49.4%**

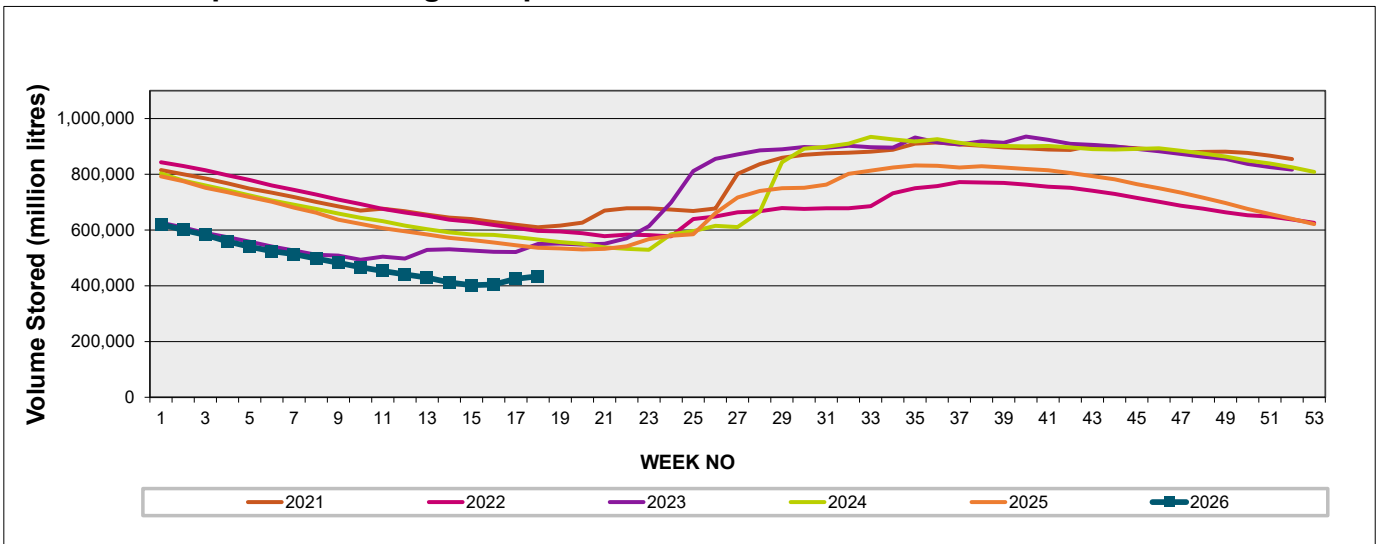
Weekly Change **1.5%**

MAJOR DAMS (WCWSS)	STORAGE						
	CAPACITY	%	%	%	%	%	%
	MI	07 May 2026	Previous week	2025	2024	2023	2022
BERG RIVER	130,010	51.2	47.7	60.7	71.3	86.4	68.8
STEENBRAS LOWER	33,517	43.2	39.2	42.6	57.5	54.9	62.9
STEENBRAS UPPER	31,767	53.6	56.5	91.3	79.4	94.8	83.9
THEEWATERSKLOOF	480,188	48.5	47.2	59.9	61.4	58.6	68.5
VOËLVLEI	164,095	50.4	49.7	58.4	52.0	40.4	58.6
WEMMERSHOEK	58,644	50.8	49.4	50.6	65.5	73.0	52.4
<b>TOTAL STORED</b>	<b>898,221</b>	<b>443,480</b>	<b>430,311</b>	<b>535,378</b>	<b>555,932</b>	<b>551,256</b>	<b>593,228</b>
<b>% STORAGE</b>		<b>49.4%</b>	<b>47.9%</b>	<b>59.6%</b>	<b>61.9%</b>	<b>61.4%</b>	<b>66.0%</b>

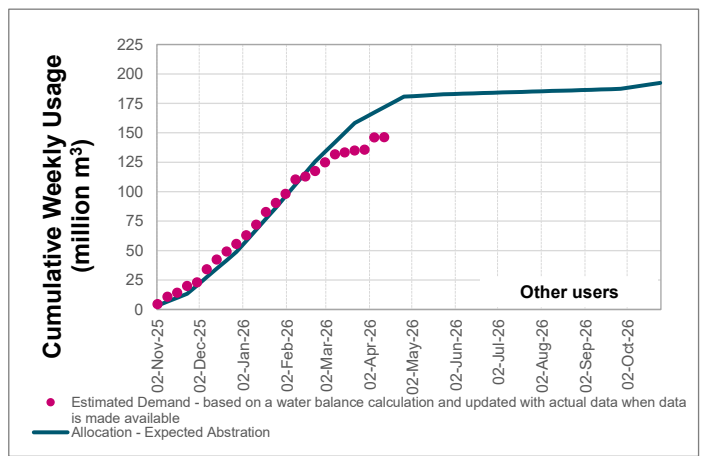
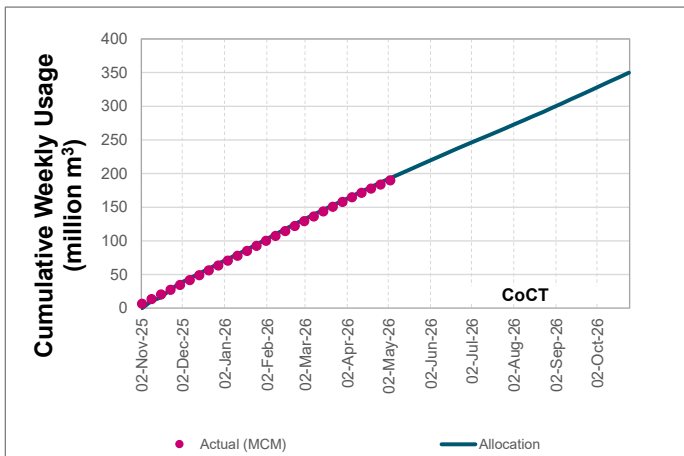
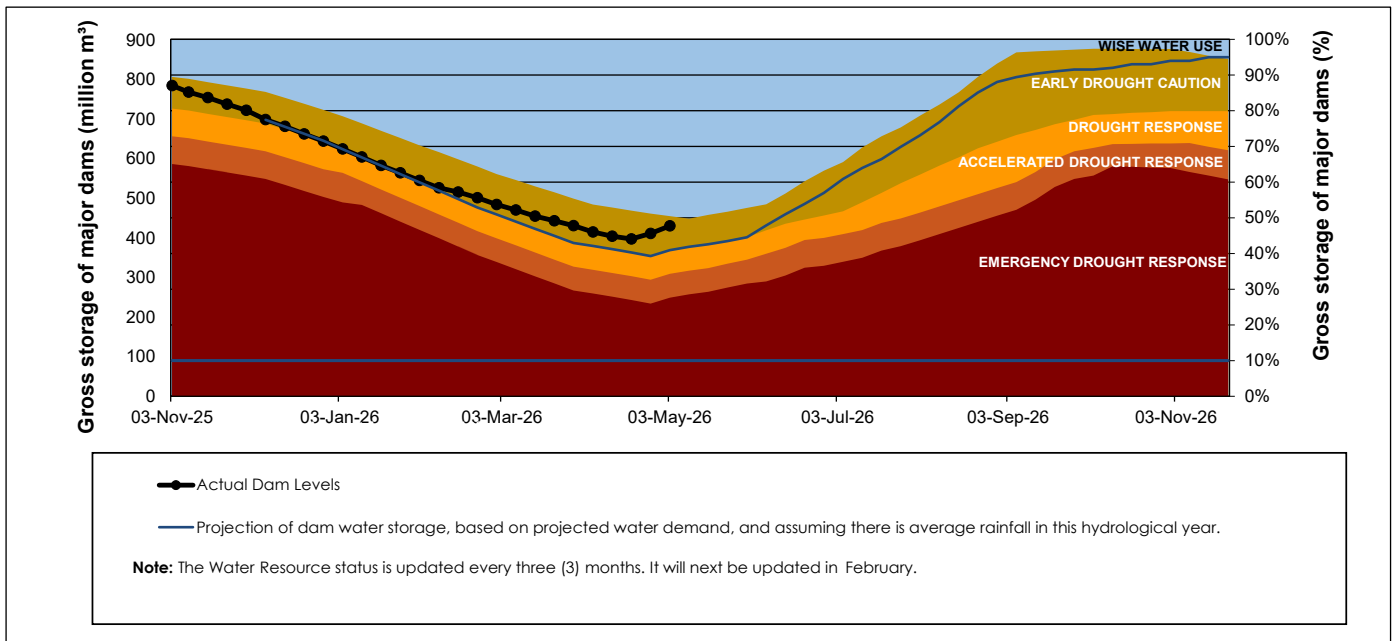
## WCWSS Storage Record (2008 - Present)



## WCWSS Comparative Storage Graph



# Projected WCWSS Dam Storage Levels



## Water Stored in Minor Dams

Overall Percentage Full **60.1**

Weekly Change **14.53**

MINOR DAMS	STORAGE						
	CAPACITY	%	%	%	%	%	%
	MI	07 May 2026	Previous week	2025	2024	2023	2022
ALEXANDRA (Table Mountain)	126	27.7	38.6	31.0	34.2	90.2	54.3
DE VILLIERS (Table Mountain)	243	73.2	64.6	37.4	80.1	102.8	67.6
HELY-HUTCHINSON (Table Mount)	925	79.1	5.1	7.7	0.0	79.3	14.6
KLEINPLAATS (Simon's Town)	1,368	20.7	20.2	8.1	40.6	16.0	48.0
LAND-EN-ZEEZICHT (Helderberg)	451	90.8	86.4	71.8	100.0	86.5	74.9
LEWIS GAY (Simon's Town)	182	36.8	29.7	79.0	42.8	51.3	0.0
VICTORIA (Table Mountain)	128	64.2	51.3	76.3	70.4	101.2	48.9
WOODHEAD (Table Mountain)	954	88.1	99.6	49.2	31.7	76.5	71.7
<b>Total Stored</b>	<b>4,377</b>	<b>2629.9</b>	<b>1993.8</b>	<b>1348.6</b>	<b>1706.3</b>	<b>2667.0</b>	<b>2097.4</b>
<b>Percentages stored</b>		<b>60.1</b>	<b>45.6</b>	<b>30.8</b>	<b>39.0</b>	<b>60.9</b>	<b>47.9</b>

## Rainfall Recorded

RAINFALL (mm)	30-Apr	1-May	2-May	3-May	4-May	5-May	6-May	May	
								Total*	LT Average
Blackheath Upper	0.0	0.0	0.0	20.0	0.0	0.0	0.0	20.0	55.7
Brooklands	0.0	0.0	2.0	30.0	4.0	4.0	0.0	40.0	107.1
Newlands	0.0	15.0	7.7	24.0	22.0	0.0	4.0	72.7	210.0
Steenbras	0.0	0.0	0.5	21.0	5.5	0.4	16.6	44.0	116.9
Table Mountain (Woodhead)	0.0	6.0	12.5	70.0	3.0	6.0	0.0	97.5	188.7
Theewaterskloof	0.0	0.0	0.0	1.0	2.4	1.0	10.0	14.4	48.5
Tygerberg	0.0	0.0	2.9	29.0	6.3	0.0	10.3	48.5	60.0
Voëlvlei	0.0	0.0	0.0	0.0	30.0	2.0	0.2	32.2	69.2
Wemmershoek	0.0	1.0	5.0	16.4	14.6	0.0	8.3	45.3	120.1
Wynberg	0.0	12.5	10.2	44.0	4.5	0.0	8.5	79.7	142.8

**Notes:**

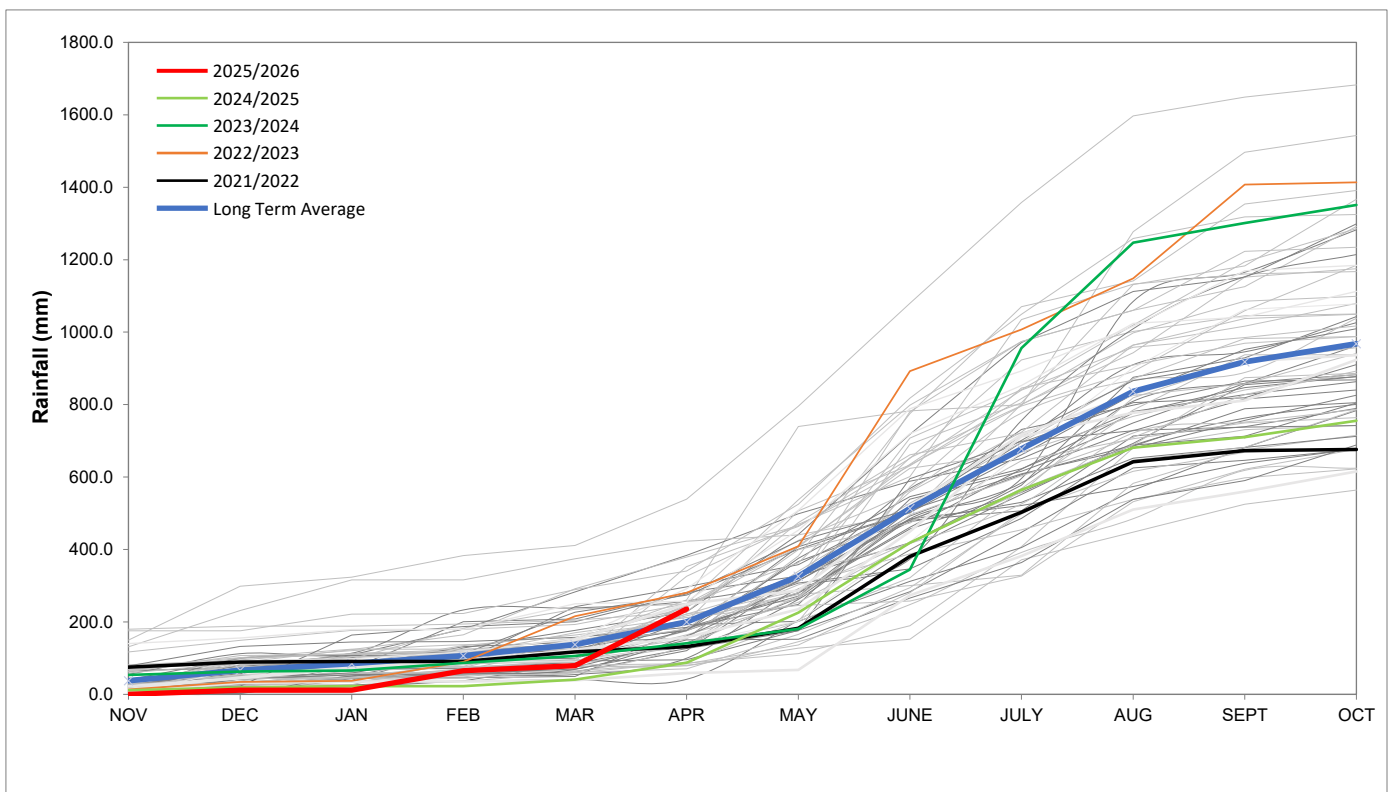
\*Total/cummulative rainfall for month indicated above

\*\*LT: Long Term

\*\*\*Readings taken at approximately 8am daily except for Newlands which is taken at 12:00 daily

## Accumulated Monthly Rainfall at Wemmershoek

Note: Wemmershoek station used due to long record and mountainous location



## Drinking Water Quality

### SAMPLE PASS RATE

Month	Water Quality Compliance (%)	Target (%)
Jan-22	99.04	98.00
Feb-22	99.04	98.00
Mar-22	98.99	98.00
Apr-22	98.96	98.00
May-22	98.90	98.00
Jun-22	98.96	98.00
Jul-22	99.46	98.50
Aug-22	99.47	98.50
Sep-22	99.46	99.00
Oct-22	99.47	99.00
Nov-22	99.45	99.00
Dec-22	99.36	99.00
Jan-23	99.36	99.00
Feb-23	99.35	99.00
Mar-23	99.29	99.00
Apr-23	99.24	99.00
May-23	99.24	99.00
Jun-23	99.18	99.00
Jul-23	99.19	99.00
Aug-23	99.14	99.00
Sep-23	99.10	99.00
Oct-23	99.10	99.00
Nov-23	99.04	99.00
Dec-23	99.15	99.00
Jan-24	99.16	99.00
Feb-24	99.12	99.00
Mar-24	99.16	99.00
Apr-24	99.20	99.00
May-24	99.21	99.00
Jun-24	99.26	99.00
Jul-24	99.27	99.00
Aug-24	99.31	99.00
Sep-24	99.33	99.00
Oct-24	99.37	99.00
Nov-24	99.42	99.00
Dec-24	99.42	99.00
Jan-25	99.48	99.00
Feb-25	99.57	99.00
Mar-25	99.61	99.00
Apr-25	99.65	99.00
May-25	99.66	99.00
Jun-25	99.62	99.00
Jul-25	99.69	99.00
Aug-25	99.69	99.00
Sep-25	99.70	99.00
Oct-25	99.70	99.00
Nov-25	99.72	99.00
Dec-25	99.72	99.00
Jan-26	99.72	99.00
Feb-26	99.70	99.00

This table shows CCT drinking water quality compliance according to the South African National Standard 241:2015. Compliance, measured against all prescribed chemical and microbiological components, consistently exceeds the very high CCT target of 99%. (Overall compliance percentages of continuous sampling and analysis are released on a monthly basis.